

Kimseye Etmem Şikâyet

Serkis Sucuyan

10 8

D_m B_{dim}⁷ E A_m F_{maj}⁷ D_m B_{dim}⁷ E₇^{b9} A

5

G_m B_b D_m A_m E₇ F_{maj}⁷ E_{sus} E₇ A_m

9

A_m A_m(maj⁷) A_m⁷ B_m⁷(b⁵) D_m⁷ F_{maj}⁷ E₇ B_m⁷(b⁵)

13

F F₉ E₇ F_{maj}⁷ A_m A_m D_m A_m A_m D_m A_m

17

A_m A_m/G[#] A_m B_m⁷(b⁵) D_m A_m⁷ F_{maj}⁷ E₇ A_m

21

F E₇ D_m⁷ E₇ A_m D_m A_m F E₇

1. 2.

1. 2.

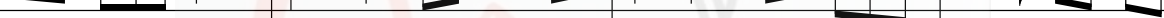
25

F E7 A_m G B_m7(b5) A_m G A_m E_m

25


F E7 A_m G B_m7(b5) A_m G A_m E_m

29 **G** **D_m7** **A_m** **A_m(add 9)** **D_m** **A_m7** **G** **B_m7(b5)** **A_m**

33 

37 **A_m** **A_m(add 9)** **D_m** **A_m7** **G** **A_m** **A_m** **D_m** **F₆** **A_m**

41 Am Am/G# Am Am7 Bm7(b5) Dm Am Fmaj7 E7 Bm7(b5) E7



The musical notation for measures 41-48 is shown on a single staff. Measure 41 starts with a treble clef and a key signature of one sharp (F#). The notes are: G4 (quarter), A4 (quarter), B4 (quarter), C5 (quarter), D5 (quarter), E5 (quarter), F#5 (quarter), G5 (quarter). Measure 42: A4 (quarter), G#4 (quarter), F#4 (quarter), E4 (quarter), D4 (quarter), C4 (quarter), B3 (quarter), A3 (quarter). Measure 43: G#4 (quarter), F#4 (quarter), E4 (quarter), D4 (quarter), C4 (quarter), B3 (quarter), A3 (quarter), G#3 (quarter). Measure 44: F#4 (quarter), E4 (quarter), D4 (quarter), C4 (quarter), B3 (quarter), A3 (quarter), G#3 (quarter), F#3 (quarter). Measure 45: E4 (quarter), D4 (quarter), C4 (quarter), B3 (quarter), A3 (quarter), G#3 (quarter), F#3 (quarter), E3 (quarter). Measure 46: D4 (quarter), C4 (quarter), B3 (quarter), A3 (quarter), G#3 (quarter), F#3 (quarter), E3 (quarter), D3 (quarter). Measure 47: C4 (quarter), B3 (quarter), A3 (quarter), G#3 (quarter), F#3 (quarter), E3 (quarter), D3 (quarter), C3 (quarter). Measure 48: B3 (quarter), A3 (quarter), G#3 (quarter), F#3 (quarter), E3 (quarter), D3 (quarter), C3 (quarter), B2 (quarter).

F E7 F E7 A_m

45

bisGen

Kimseye Etmem Şikâyet

Serkis Sucuyan

Em C#dim7 F# Bm G maj7 Em C#dim7 F#7b9 B

Am C Em Bm F#7 G maj7 F#sus F#7 Bm

Bm Bm(maj7) Bm7 C#m7(b5) Em7 G maj7 F#7 C#m7(b5)

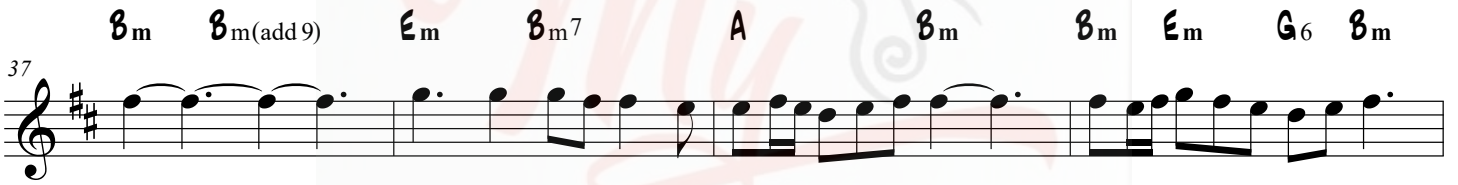
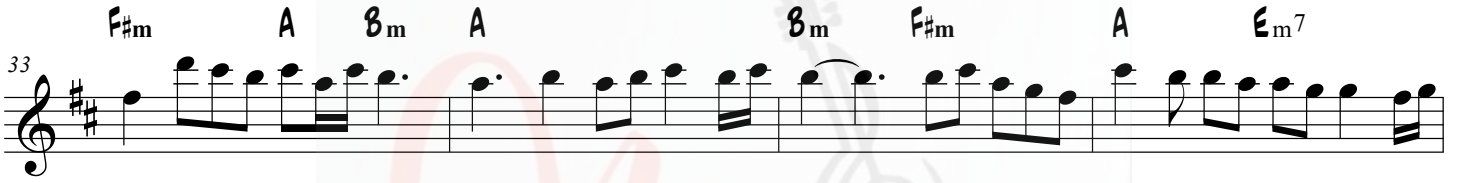
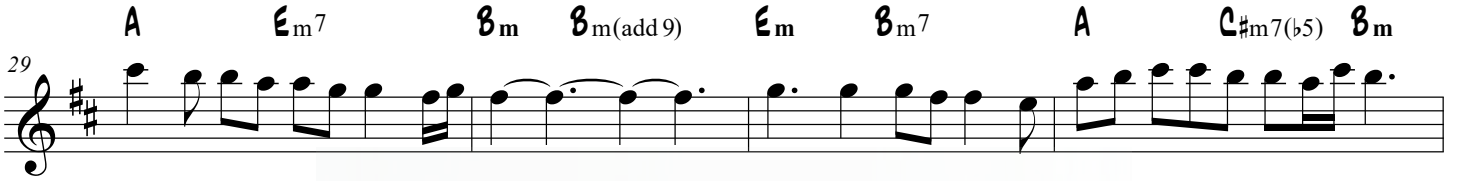
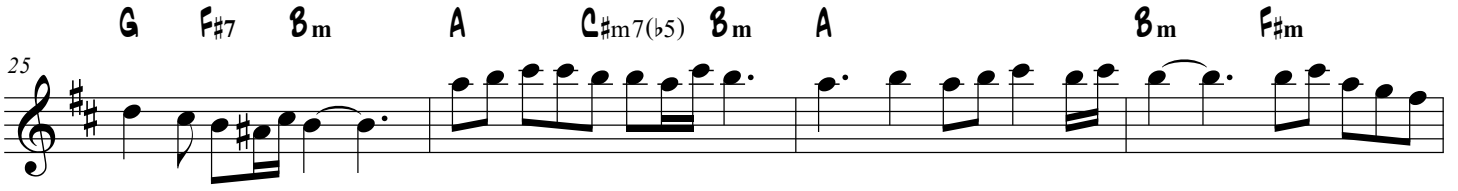
G G9 F#7 G maj7 Bm Bm Em Bm Bm Em Bm

Bm Bm/A# Bm C#m7(b5) Em Bm7 G maj7 F#7 Bm

G F#7 Em7 F#7 Bm Em Bm G F#7

1. 2.

1. 2.



Kimseye Etmem Şikâyet

Serkis Sucuyan

Chord progression for the song "Kimseye Etmem Şikâyet" by Serkis Sucuyan. The key signature is B-flat major (two flats).

Chords: Fm, Ddim7, G, CmAbmaj7, Fm, Ddim7, G7b9, C.

5

Chords: Bbm, Db, Fm, Cm, G7, Abmaj7, Gsus, G7, Cm.

9

Chords: Cm, Cm(maj7), Cm7, Dm7(b5), Fm7, Abmaj7, G7, Dm7(b5).

13

Chords: Ab, Ab9, G7, Abmaj7, Cm, Cm, Fm, Cm, Cm, Fm, Cm.

17

Chords: Cm, Cm/B, Cm, Dm7(b5), Fm, Cm7Abmaj7, G7, Cm.

21

Chords: Ab, G7, Fm7, G7, Cm, Fm, Cm, Ab, G7.

1. 2.

25 A^b $G7$ C_m B^b $D_{m7(b5)}$ C_m B^b C_m G_m

29 B^b F_{m7} C_m $C_m(add\ 9)$ F_m C_m7 B^b $D_{m7(b5)}$ C_m

33 G_m B^b C_m B^b C_m G_m B^b F_{m7}

37 C_m $C_m(add\ 9)$ F_m C_m7 B^b C_m C_m F_m A^b6 C_m

41 C_m C_m/B C_m $C_m D_{m7(b5)}$ F_m $C_m A^bmaj7$ $G7$ $D_{m7(b5)} G7$

45 A^b $G7$ A^b $G7$ C_m

bisGen

Kimseye Etmem Şikâyet

Serkis Sucuyan

10

F#m D#dim7 G# C#mAmaj7 F#m D#dim7 G#7b9 C#

5

Bm D F#m C#m G#7 Amaj7 G#sus G#7 C#m

9

C#m C#m(maj7) C#m7 D#m7(b5) F#m7 Amaj7 G#7 D#m7(b5)

13

A A6 G#7 Amaj7 C#m C#m F#m C#m C#m F#m C#m

17

C#m C#m/C C#m D#m7(b5) F#m C#m7Amaj7 G#7 C#m

21

A G#7 F#m7 G#7 C#m F#m C#m A G#7

25 A G#7 C#m B D#m7(b5) C#m B C#m G#m

29 B F#m7 C#m C#m(add 9) F#m C#m7 B D#m7(b5) C#m

33 G#m B C#m B C#m G#m B F#m7

37 C#m C#m(add 9) F#m C#m7 B C#m C#m F#m A6 C#m

41 C#m C#m/C C#m C#m D#m7(b5) F#m C#m A maj7 G#7 D#m7(b5) G#7

45 A G#7 A G#7 C#m

bisGen

Kimseye Etmem Şikâyet

Serkis Sucuyan

Chord progression for the song "Kimseye Etmem Şikâyet" by Serkis Sucuyan. The key signature is one flat (B-flat), and the time signature is 10/8.

Chords: Gm, E dim7, A, Dm Bb maj7, Gm, E dim7, A7b9, D.

5 8

Chords: Cm, Eb, Gm, Dm, A7, Bb maj7, Asus, A7, Dm.

9

Chords: Dm, Dm(maj7), Dm7, Em7(b5), Gm7, Bb maj7, A7, Em7(b5).

13

Chords: Bb, Bb6, A7 Bb maj7, Dm, Dm Gm Dm, Dm Gm Dm.

17

Chords: Dm, Dm/C#, Dm, Em7(b5), Gm, Dm7 Bb maj7, A7, Dm.

21

Chords: Bb, A7, Gm7, A7, Dm Gm Dm, Bb, A7.

1. 2.

25 $B\flat$ $A7$ Dm C $E_{m7}(\flat 5)$ Dm C Dm A_m

29 C G_{m7} Dm $Dm(add\ 9)$ G_m $Dm7$ C $E_{m7}(\flat 5)$ Dm

33 A_m C Dm C Dm A_m C G_{m7}

37 Dm $Dm(add\ 9)$ G_m $Dm7$ C Dm Dm G_m $B\flat 6$ Dm

41 Dm $Dm/C\sharp$ Dm $Dm7$ $E_{m7}(\flat 5)$ G_m Dm $B\flat maj7$ $A7$ $E_{m7}(\flat 5)$ $A7$

45 $B\flat$ $A7$ $B\flat$ $A7$ Dm

bisGen

Kimseye Etmem Şikâyet

Serkis Sucuyan

Am F#dim7 B Em C maj7 Am F#dim7 B7b9 E

5 Dm F Am Em B7 C maj7 B sus B7 Em

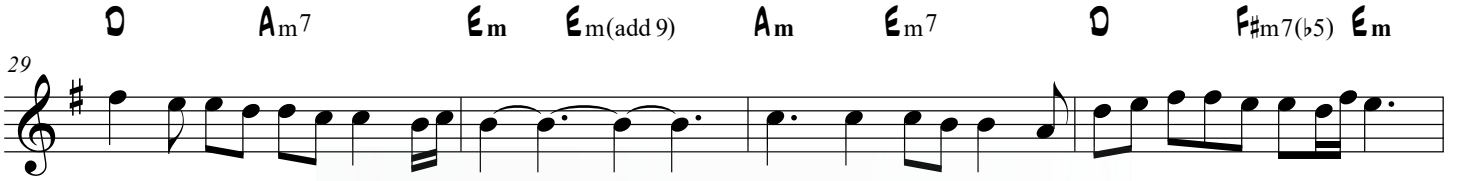
9 Em Em(maj7) Em7 F#m7(b5) Am7 C maj7 B7 F#m7(b5)

13 C C9 B7 C maj7 Em Em Am Em Em Am Em

17 Em Em/D# Em F#m7(b5) Am Em7 C maj7 B7 Em

21 C B7 Am7 B7 Em Am Em C B7





Kimseye Etmem Şikâyet

Serkis Sucuyan

10 8

B^bm G^{dim}7 C F^mD^b maj7 B^bm G^{dim}7 C^{7b9} F

5

E^bm G^b B^bm F^m C⁷ D^b maj7 C^{sus} C⁷ F^m

9

F^m F^m(maj7) F^m7 G^m7(b5) B^bm7 D^b maj7 C⁷ G^m7(b5)

13

D^b D^b6 C⁷ D^b maj7 F^m F^m B^bm F^m F^m B^bm F^m

1. 2.

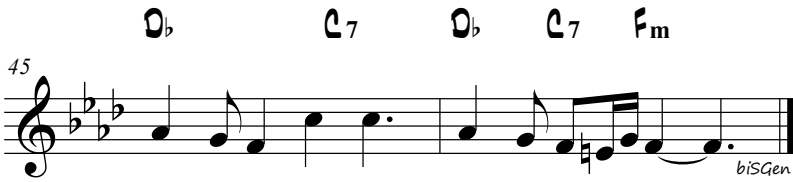
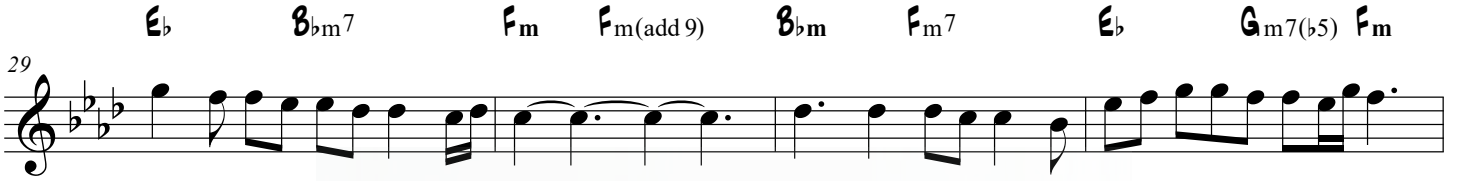
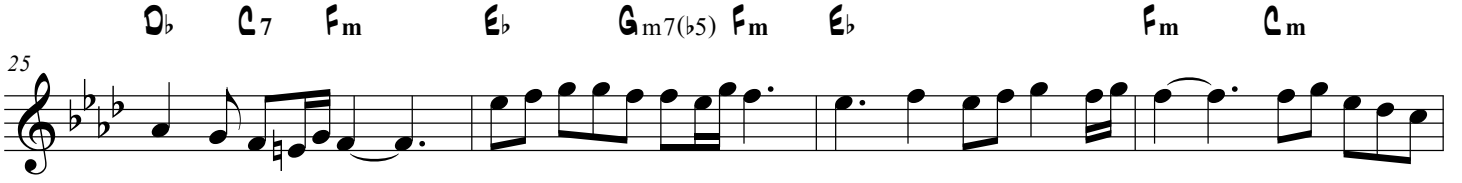
17

F^m F^m/E F^m G^m7(b5) B^bm F^m7 D^b maj7 C⁷ F^m

21

D^b C⁷ B^bm7 C⁷ F^m B^bm F^m D^b C⁷

1. 2.



Kimseye Etmem Şikâyet

Serkis Sucuyan

8m G#dim7 C# F#m D maj7 8m G#dim7 C#7b9 F#

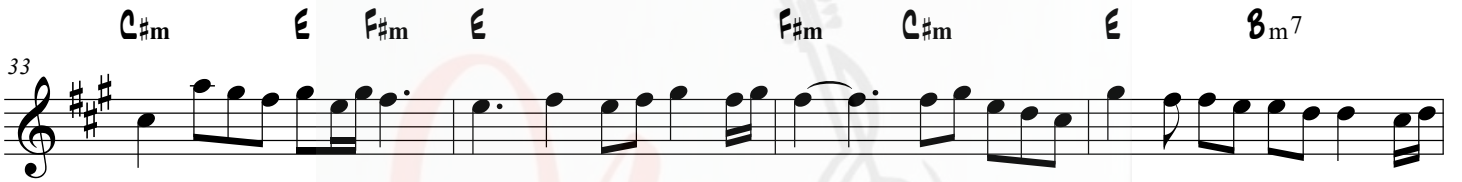
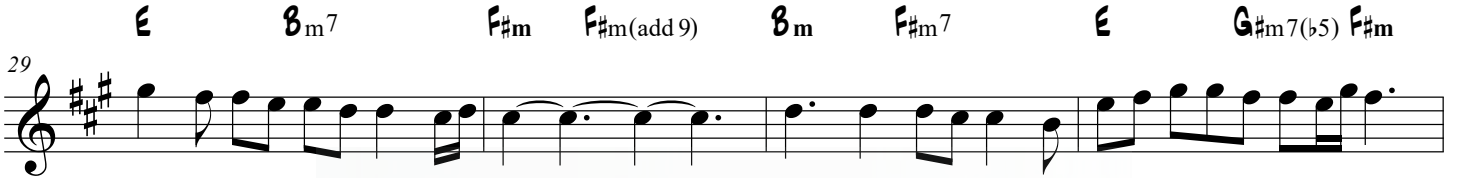
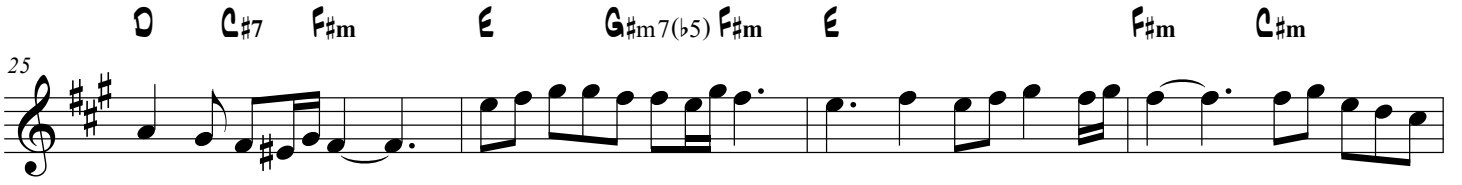
5 E m G 8m F#m C#7 D maj7 C#sus C#7 F#m

9 F#m F#m(maj7) F#m7 G#m7(b5) 8m7 D maj7 C#7 G#m7(b5)

13 D D6 C#7 D maj7 F#m F#m 8m F#m F#m 8m F#m

17 F#m F#m/F F#m G#m7(b5) 8m F#m7 D maj7 C#7 F#m

21 D C#7 8m7 C#7 F#m 8m F#m D C#7



Kimseye Etmem Şikâyet

Serkis Sucuyan

Chord progression for the song "Kimseye Etmem Şikâyet" by Serkis Sucuyan. The key signature is B-flat major (two flats).

Chords: C_m, A_{dim}7, D, G_mE_b maj7, C_m, A_{dim}7, D7b9, G.

5 F_m A_b C_m G_m D7 E_b maj7 D_{sus} D7 G_m

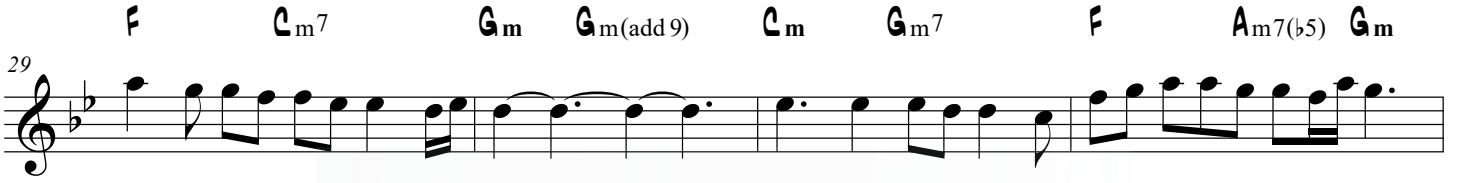
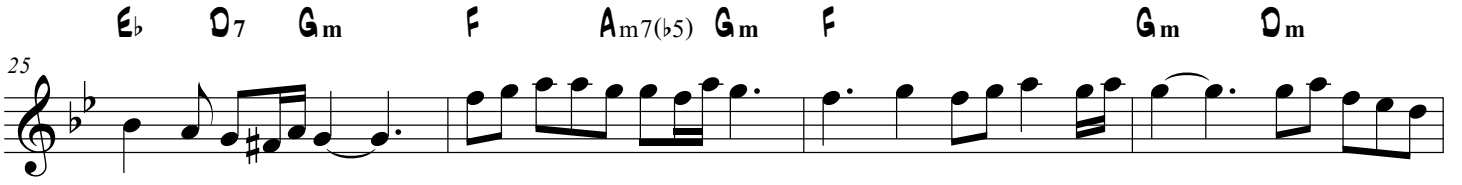
9 G_m G_m(maj7) G_m7 A_m7(b5) C_m7 E_b maj7 D7 A_m7(b5)

13 E_b E_b9 D7 E_b maj7 G_m G_m C_m G_m G_m C_m G_m

17 G_m G_m/F# G_m A_m7(b5) C_m G_m7E_b maj7 D7 G_m

21 E_b D7 C_m7 D7 G_m C_m G_m E_b D7

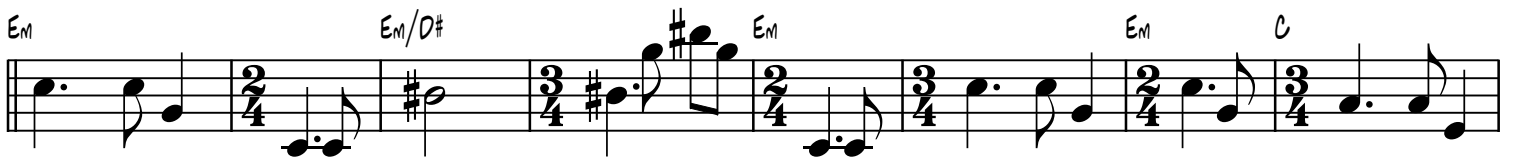
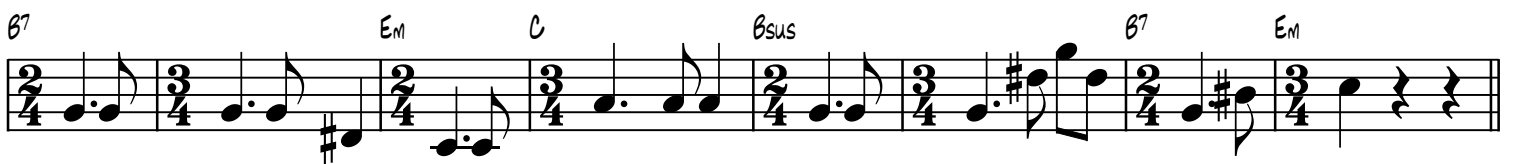
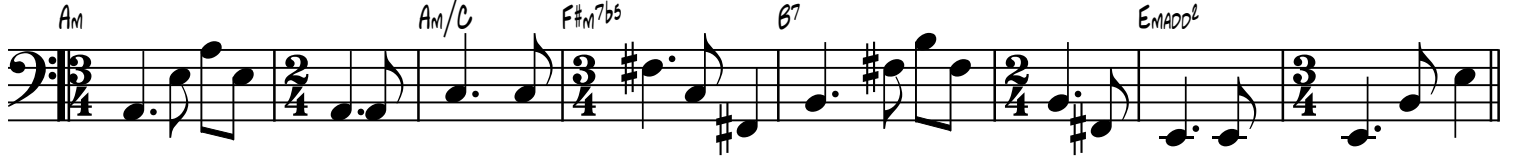
1. 2.



Kimseye Etmem Şikâyet

Beste: Serkis Sucuyan

Nota Akor Eşlik Video: Yusuf Bişgen



Am F#m7b5 C B7 Amadd2 Am6

C Amadd2 C B7 Em Em

Em C Em Em Em/D#

Em Em C Am F#m7b5 C

B7 Amadd2 Am6 C Amadd2

C B7 Em Em Em C Em

Em Em/D# Em Em F#m7b5

Am Em C B7 Am6

C B7 C B7 Em Em

Em Em/D# Em Em F#m7b5

Am Em C B7 Am⁶

C B7 C B7 Em Em

D F#m7b5 Em D D

Em Bm D Amadd²

Em Emadd² Am Em⁷

D Em Bm F#m7b5 Em

D D Em Bm

D Amadd² Em Emadd²

Am Em⁷ D Em

Em Am Em Em Em Em/D#

